



National Student Clearinghouse™
Research Center™

Institutional Persistence and Retention Report

Fall 2019 to 2023 Entering Cohorts

IMPERIAL VALLEY COLLEGE

School and Branch Code: 001214-00
Current Institutional Sector Designation:
Two-Year Public

NATIONAL STUDENT CLEARINGHOUSE RESEARCH CENTER

2300 Dulles Station Blvd., Suite 220, Herndon, VA 20171

About Your Institution's Persistence and Retention Report

The purpose of this report is to provide you with a view of student retention and persistence rates for your institution. This report is exclusively for your institution's use. The Clearinghouse will not publish or distribute your institution's results.

Data Source

The data for this report were drawn from the Clearinghouse's national coverage of enrollment and awarded education credentials to explore the year-to-year persistence and retention rates of cohorts of first-time-in-college students who started in the fall terms of 2019 to 2023.

The student outcomes captured in this report are based on student-level data representing an unduplicated headcount of students across all institutions, a feature of the Clearinghouse data sets that distinguishes them from many other data sources, including the Integrated Postsecondary Education Data System (IPEDS), that may not accurately capture the complexity of postsecondary pathways because they are not structured to identify multiple enrollments by individual students. The capability of StudentTracker to link enrollment records across institutions nationally allows researchers to follow students longitudinally as they move from institution to institution, producing a fuller picture of college persistence and completion.

The Definitions and Methodology section at the end addresses cohort selection and terminology. Additional questions or feedback can be sent to nscresearch@studentclearinghouse.org.

National Benchmarks

If you would like to see the latest Persistence and Retention snapshot, published by the National Student Clearinghouse Research Center, please visit: [NSC Research Center reports](#)

Recent Reporting Changes

Data Limitations Related to Submission Timing

This year is the first edition of the Persistence and Retention report in which all cohort years incorporate any newly submitted or updated enrollment data from participating institutions received since the prior publication. In reviewing longitudinal submission patterns, we identified cases where institutions submitted small numbers of subsequent enrollment records after the initial data submission window. Because these enrollment records had not been submitted by the time of the report's data pull, some students who did in fact persist or were retained have previously been classified as having stopped out simply because their enrollment records had not yet been reported to the Clearinghouse. While this pattern introduces a modest temporal bias, its overall impact is limited. For cohorts prior to 2020, late-submitted records resulted in the reclassification of approximately 0.3 percent of students who were initially counted as stopped out but are now correctly identified as persisted or retained. For the pandemic years of 2020, 2021, and 2022, this share roughly doubled to an

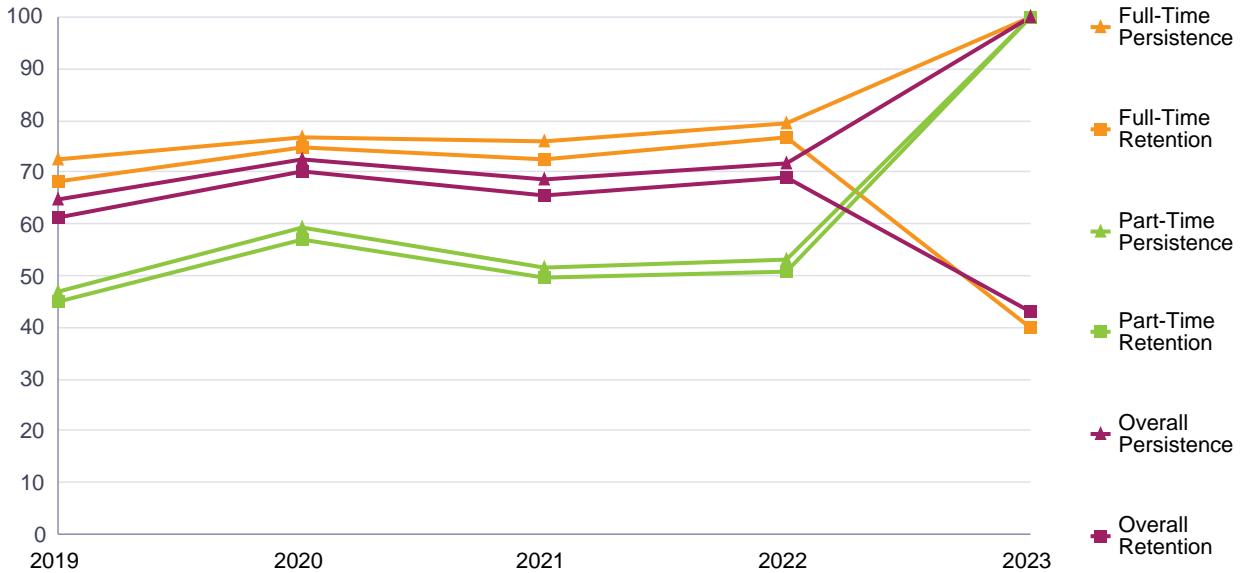
average of 0.6 percent of each entering cohort. Persistence and retention rates for the 2023 cohort may be disproportionately underestimated as well, if institution submission patterns remain affected. Apparent year-over-year changes may reflect differences in data completeness rather than actual changes in student behavior, and comparisons between the most recent cohort and earlier cohorts within this report should be made with caution.

Methodological Enhancements

Two eligibility rules are now enforced consistently for all cohort years. First, institutions that are not Title IV–eligible or not degree-granting are excluded. Second, to be eligible for a given cohort year, an institution must have submitted enrollment records to the Clearinghouse for at least four years prior to the publication cutoff date.

BY STARTING ENROLLMENT INTENSITY

IMPERIAL VALLEY COLLEGE

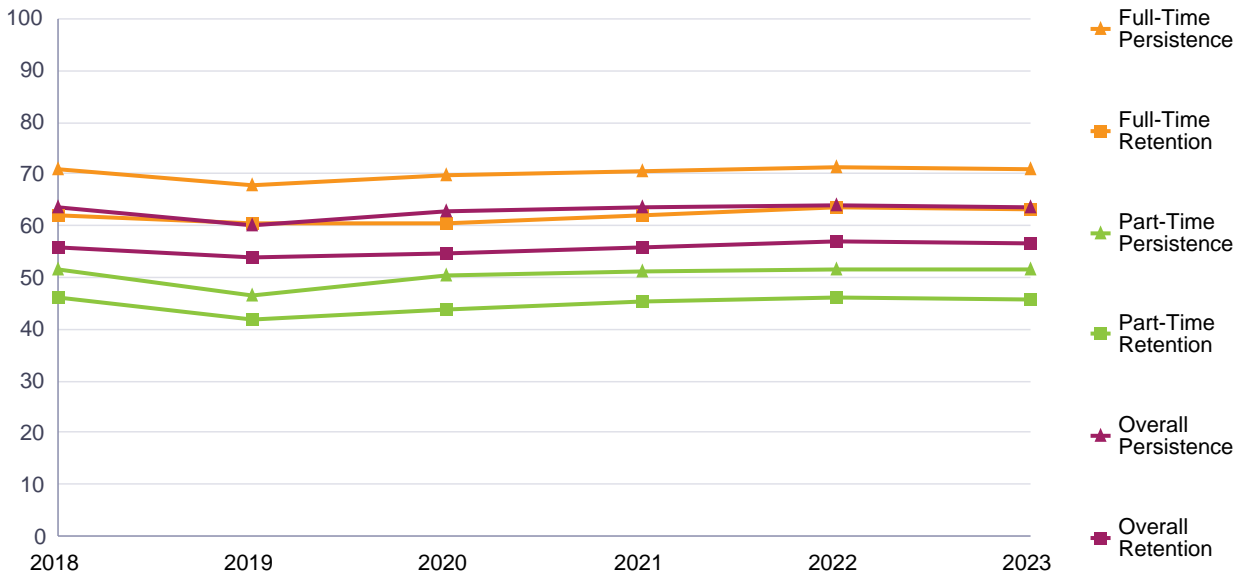


Beginning Enrollment Intensity		Fall 2019 Entering Cohort	Fall 2020 Entering Cohort	Fall 2021 Entering Cohort	Fall 2022 Entering Cohort	Fall 2023 Entering Cohort
Overall	Retained Count	1,039	799	877	1,070	9
	Retention Rate	61.33%	70.27%	65.59%	69.08%	42.86%
	Persisted Count	1,097	823	915	1,109	21
	Persistence Rate	64.76%	72.38%	68.44%	71.59%	100.00%
	Total Students	1,694	1,137	1,337	1,549	21
Full-Time	Retained Count	813	640	675	833	8
	Retention Rate	68.20%	74.68%	72.66%	76.85%	40.00%
	Persisted Count	862	657	705	862	20
	Persistence Rate	72.32%	76.66%	75.89%	79.52%	100.00%
	Total Students	1,192	857	929	1,084	20
Part-Time	Retained Count	226	159	202	237	1
	Retention Rate	45.02%	56.79%	49.51%	50.97%	100.00%
	Persisted Count	235	166	210	247	1
	Persistence Rate	46.81%	59.29%	51.47%	53.12%	100.00%
	Total Students	502	280	408	465	1

See Starting Enrollment Intensity in Definitions and Methodology on page 12.

BY STARTING ENROLLMENT INTENSITY

National Results for Two-Year Public Institutions

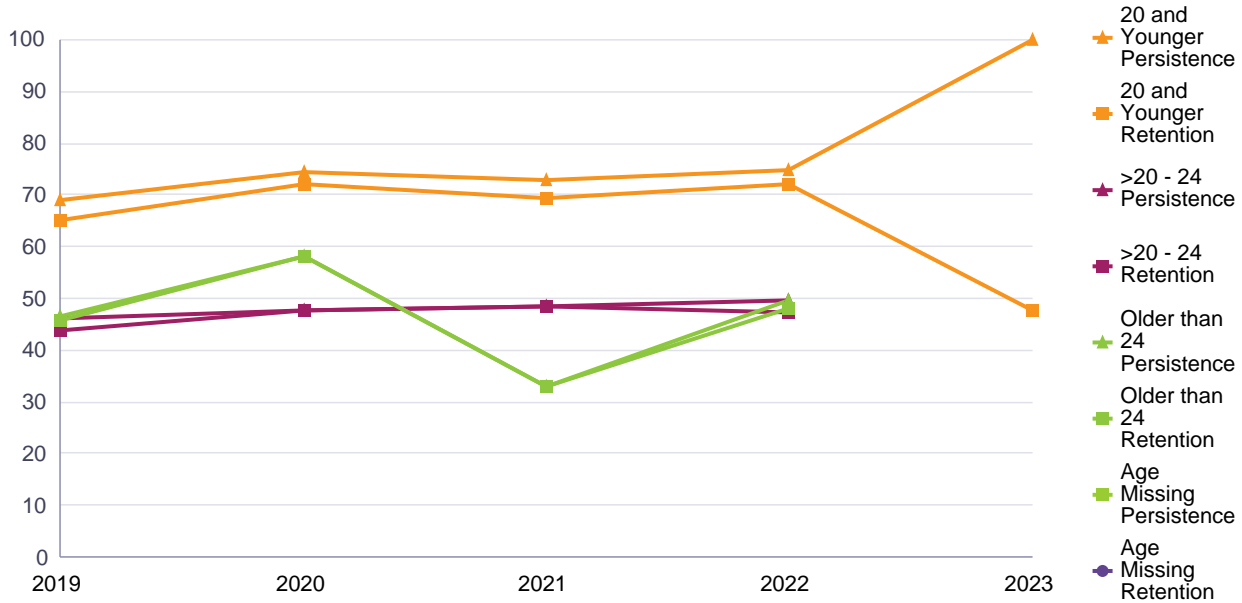


Beginning Enrollment Intensity		Fall 2018 Entering Cohort	Fall 2019 Entering Cohort	Fall 2020 Entering Cohort	Fall 2021 Entering Cohort	Fall 2022 Entering Cohort	Fall 2023 Entering Cohort
Overall	Retained Count	442,952	441,165	378,486	383,995	402,870	368,522
	Retention Rate	55.86%	53.85%	54.65%	55.69%	56.98%	56.52%
	Persisted Count	504,487	493,546	436,061	436,967	453,283	415,327
	Persistence Rate	63.63%	60.24%	62.97%	63.38%	64.11%	63.69%
	Total Students	792,898	819,262	692,521	689,488	707,052	652,069
Full-Time	Retained Count	308,567	318,516	273,647	269,331	282,558	256,908
	Retention Rate	61.84%	60.59%	60.52%	61.95%	63.58%	63.21%
	Persisted Count	353,021	356,440	314,753	306,763	317,659	288,971
	Persistence Rate	70.75%	67.81%	69.62%	70.56%	71.48%	71.10%
	Total Students	498,977	525,661	452,128	434,767	444,419	406,442
Part-Time	Retained Count	127,293	116,552	100,097	110,151	116,066	107,814
	Retention Rate	45.98%	41.96%	43.92%	45.16%	45.94%	45.66%
	Persisted Count	142,717	129,649	114,970	124,386	130,236	121,359
	Persistence Rate	51.55%	46.68%	50.44%	51.00%	51.55%	51.40%
	Total Students	276,859	277,769	227,916	243,906	252,640	236,111

See Starting Enrollment Intensity in Definitions and Methodology on page 12.

BY AGE

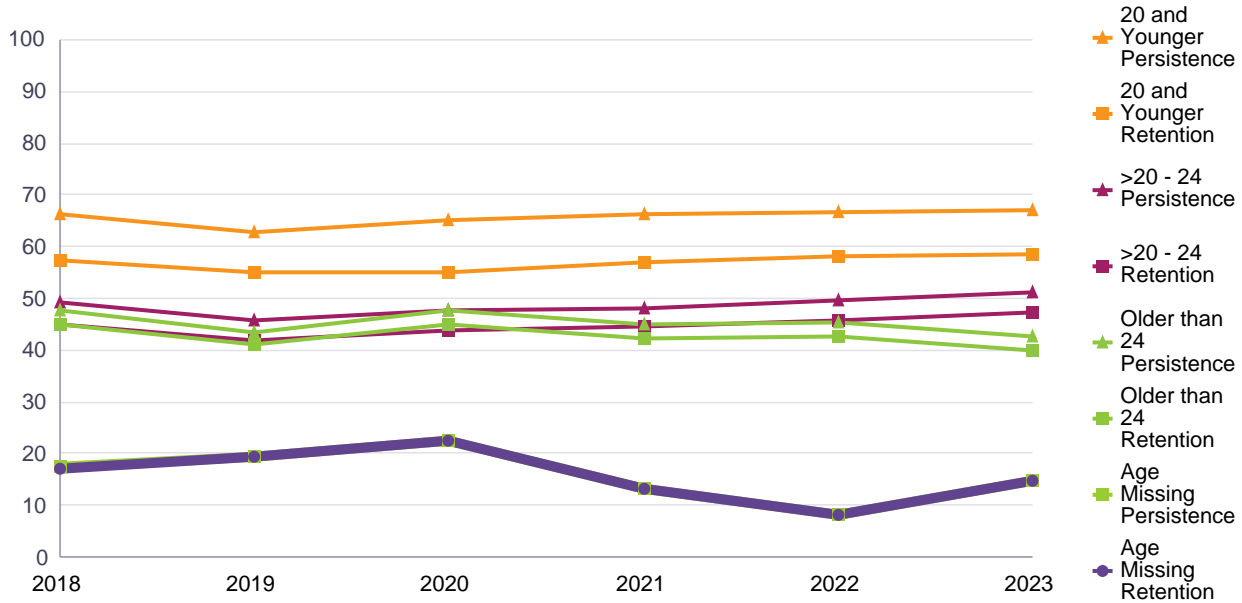
IMPERIAL VALLEY COLLEGE



Age at College Entry		Fall 2019 Entering Cohort	Fall 2020 Entering Cohort	Fall 2021 Entering Cohort	Fall 2022 Entering Cohort	Fall 2023 Entering Cohort
20 and Younger	Retained Count	892	738	804	964	11
	Retention Rate	65.20%	71.93%	69.55%	71.94%	47.83%
	Persisted Count	946	763	844	1,001	23
	Persistence Rate	69.15%	74.37%	73.01%	74.70%	100.00%
	Total Students	1,368	1,026	1,156	1,340	23
>20 - 24	Retained Count	39	19	28	41	--
	Retention Rate	43.82%	47.50%	48.28%	47.13%	--
	Persisted Count	41	19	28	43	--
	Persistence Rate	46.07%	47.50%	48.28%	49.43%	--
	Total Students	89	40	58	87	--
Older than 24	Retained Count	108	42	62	87	--
	Retention Rate	45.57%	58.33%	32.80%	48.07%	--
	Persisted Count	110	42	62	90	--
	Persistence Rate	46.41%	58.33%	32.80%	49.72%	--
	Total Students	237	72	189	181	--
Age Missing	Retained Count	--	--	--	--	--
	Retention Rate	--	--	--	--	--
	Persisted Count	--	--	--	--	--
	Persistence Rate	--	--	--	--	--
	Total Students	--	--	--	--	--

BY AGE

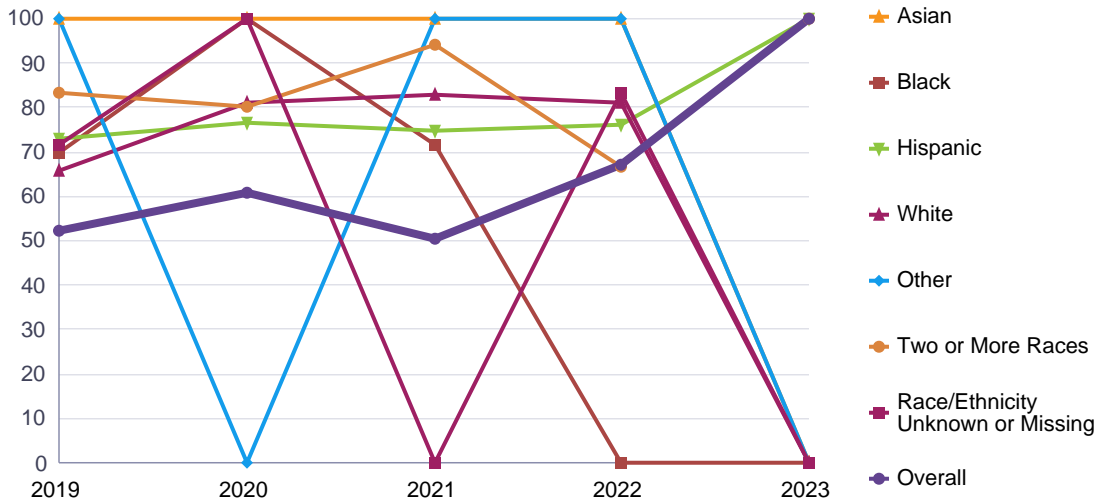
National Results for Two-Year Public Institutions



Age at College Entry		Fall 2018 Entering Cohort	Fall 2019 Entering Cohort	Fall 2020 Entering Cohort	Fall 2021 Entering Cohort	Fall 2022 Entering Cohort	Fall 2023 Entering Cohort
20 and Younger	Retained Count	375,791	378,187	330,860	330,998	349,930	314,624
	Retention Rate	57.22%	55.17%	55.18%	57.12%	58.30%	58.51%
	Persisted Count	436,114	430,155	389,331	384,398	400,821	361,173
	Persistence Rate	66.41%	62.75%	64.94%	66.34%	66.78%	67.17%
	Total Students	656,734	685,547	599,552	579,478	600,236	537,686
>20 - 24	Retained Count	26,493	24,966	19,559	21,376	22,913	23,912
	Retention Rate	44.88%	41.94%	43.76%	44.54%	45.88%	47.22%
	Persisted Count	29,016	27,141	21,371	23,134	24,799	25,851
	Persistence Rate	49.15%	45.59%	47.81%	48.20%	49.65%	51.05%
	Total Students	59,036	59,529	44,701	47,994	49,946	50,637
Older than 24	Retained Count	51,749	47,389	36,498	40,250	39,257	37,901
	Retention Rate	45.04%	41.17%	44.78%	42.41%	42.71%	40.03%
	Persisted Count	54,812	49,882	38,838	42,566	41,569	40,322
	Persistence Rate	47.71%	43.33%	47.65%	44.85%	45.23%	42.58%
	Total Students	114,887	115,109	81,506	94,908	91,910	94,687
Age Missing	Retained Count	90	124	104	67	60	55
	Retention Rate	17.14%	19.22%	22.41%	13.19%	8.29%	14.71%
	Persisted Count	91	126	104	67	60	55
	Persistence Rate	17.33%	19.53%	22.41%	13.19%	8.29%	14.71%
	Total Students	525	645	464	508	724	374

PERSISTENCE: BY RACE/ETHNICITY

IMPERIAL VALLEY COLLEGE

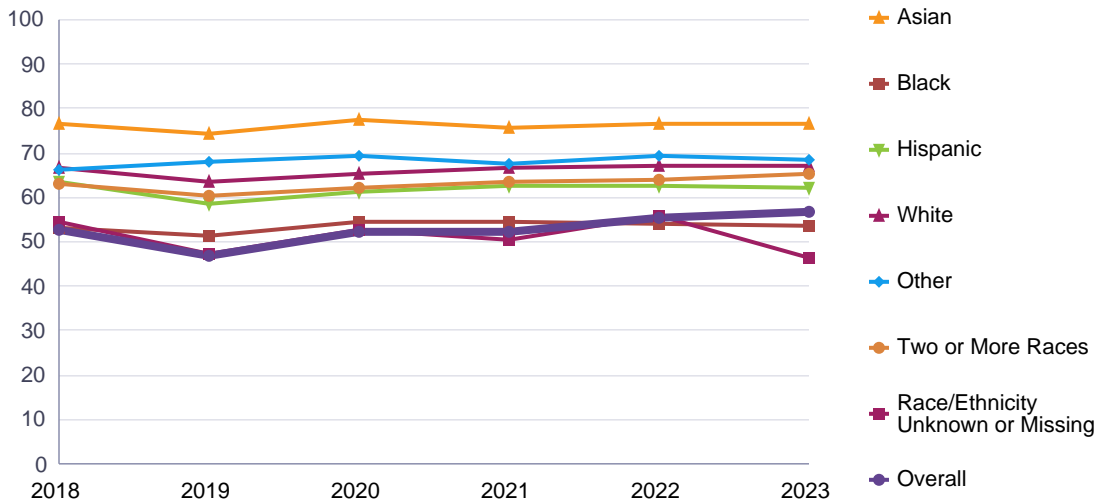


Race/Ethnicity		Fall 2019 Entering Cohort	Fall 2020 Entering Cohort	Fall 2021 Entering Cohort	Fall 2022 Entering Cohort	Fall 2023 Entering Cohort
Asian	Persisted Count	4	1	6	1	0
	Persistence Rate	100.0%	100.0%	100.0%	100.0%	0.0%
	Total Students	4	1	6	1	0
Black	Persisted Count	7	1	5	0	0
	Persistence Rate	70.0%	100.0%	71.4%	0.0%	0.0%
	Total Students	10	1	7	2	0
Hispanic	Persisted Count	695	589	622	441	15
	Persistence Rate	73.0%	76.8%	74.9%	75.9%	100.0%
	Total Students	952	767	830	581	15
White	Persisted Count	29	26	29	13	0
	Persistence Rate	65.9%	81.3%	82.9%	81.3%	0.0%
	Total Students	44	32	35	16	0
Other	Persisted Count	1	0	1	1	0
	Persistence Rate	100.0%	0.0%	100.0%	100.0%	0.0%
	Total Students	1	0	1	1	0
Two or More Races	Persisted Count	10	8	16	2	2
	Persistence Rate	83.3%	80.0%	94.1%	66.7%	100.0%
	Total Students	12	10	17	3	2
Race/Ethnicity Unknown or Missing	Persisted Count	5	2	0	5	0
	Persistence Rate	71.4%	100.0%	0.0%	83.3%	0.0%
	Total Students	7	2	1	6	0
Overall	Persisted Count	346	197	255	671	6
	Persistence Rate	52.1%	60.6%	50.4%	67.2%	100.0%
	Total Students	664	325	506	998	6

See Race/Ethnicity in Definitions and Methodology on page 12.

PERSISTENCE: BY RACE/ETHNICITY

National Results for Two-Year Public Institutions



Race/Ethnicity		Fall 2018 Entering Cohort	Fall 2019 Entering Cohort	Fall 2020 Entering Cohort	Fall 2021 Entering Cohort	Fall 2022 Entering Cohort	Fall 2023 Entering Cohort
Asian	Persisted Count	29,394	28,527	26,339	24,179	24,410	24,444
	Persistence Rate	76.5%	74.3%	77.5%	75.8%	76.4%	76.6%
	Total Students	38,413	38,403	33,984	31,900	31,955	31,916
Black	Persisted Count	54,776	54,331	45,982	44,991	46,571	40,483
	Persistence Rate	53.4%	51.2%	54.4%	54.6%	53.9%	53.7%
	Total Students	102,608	106,061	84,470	82,418	86,354	75,422
Hispanic	Persisted Count	121,092	120,415	103,269	104,777	113,122	105,037
	Persistence Rate	63.4%	58.6%	61.2%	62.7%	62.8%	62.4%
	Total Students	190,889	205,619	168,740	167,104	180,108	168,472
White	Persisted Count	227,943	221,451	201,476	194,639	188,687	161,995
	Persistence Rate	66.4%	63.7%	65.5%	66.5%	67.2%	67.0%
	Total Students	343,061	347,894	307,698	292,842	281,005	241,727
Other	Persisted Count	4,322	3,913	2,611	3,282	3,732	4,069
	Persistence Rate	66.2%	68.0%	69.5%	67.6%	69.3%	68.3%
	Total Students	6,533	5,759	3,759	4,855	5,386	5,959
Two or More Races	Persisted Count	21,509	21,781	20,646	20,395	22,350	21,088
	Persistence Rate	62.9%	60.3%	62.2%	63.3%	64.0%	65.2%
	Total Students	34,198	36,148	33,195	32,213	34,898	32,352
Race/Ethnicity Unknown or Missing	Persisted Count	10,037	9,945	7,934	8,209	10,020	9,680
	Persistence Rate	54.4%	47.2%	52.7%	50.3%	55.7%	46.4%
	Total Students	18,436	21,081	15,068	16,312	17,986	20,859
Overall	Persisted Count	50,960	46,941	41,387	49,693	58,357	60,605
	Persistence Rate	52.5%	47.0%	52.2%	52.2%	55.5%	56.8%

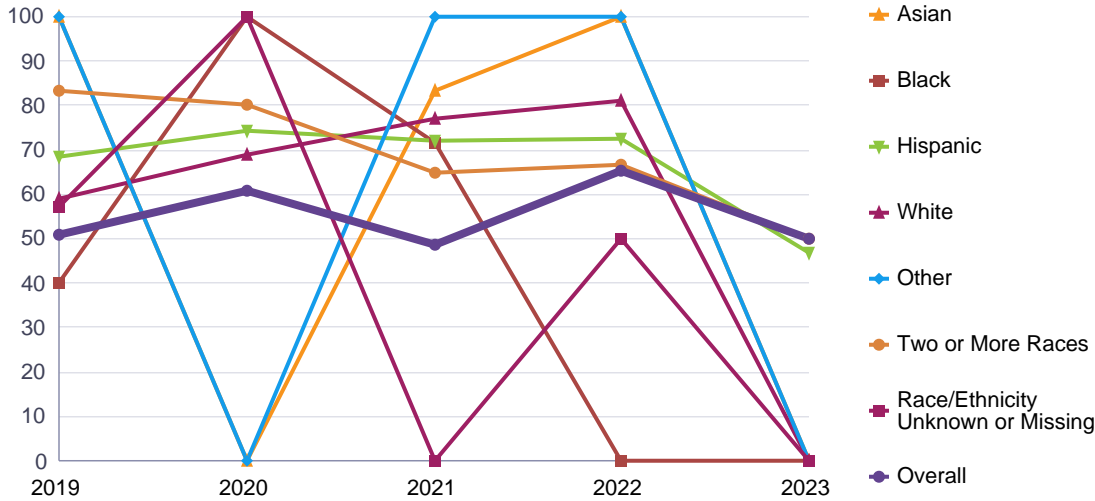


	Total Students	97,044	99,865	79,309	95,244	105,124	106,677
--	----------------	--------	--------	--------	--------	---------	---------

See Race/Ethnicity in Definitions and Methodology on page 12.

RETENTION: BY RACE/ETHNICITY

IMPERIAL VALLEY COLLEGE

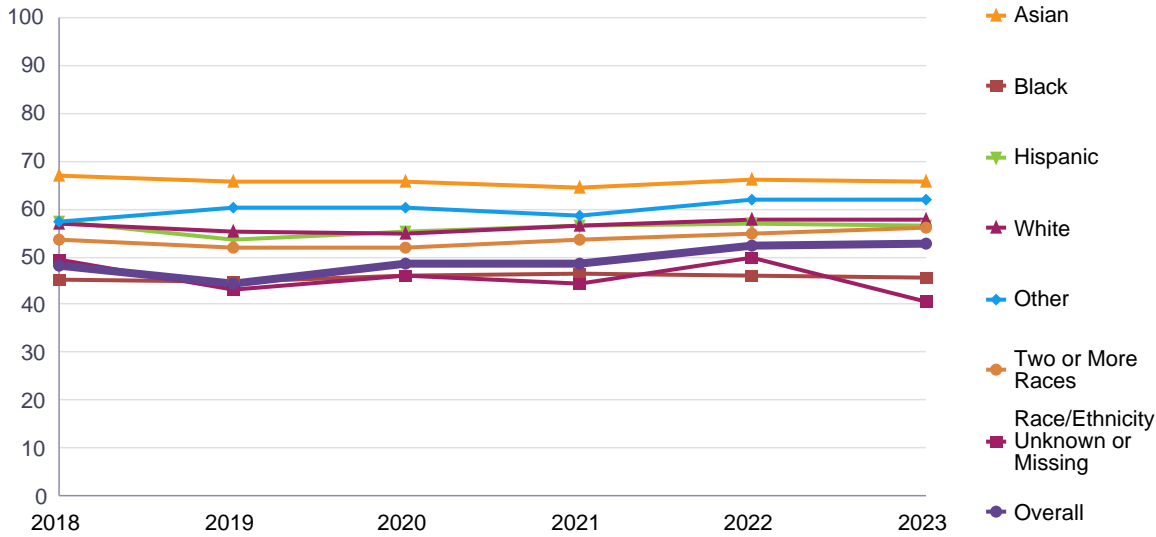


Race/Ethnicity		Fall 2019 Entering Cohort	Fall 2020 Entering Cohort	Fall 2021 Entering Cohort	Fall 2022 Entering Cohort	Fall 2023 Entering Cohort
Asian	Retained Count	4	0	5	1	0
	Retention Rate	100.0%	0.0%	83.3%	100.0%	0.0%
	Total Students	4	1	6	1	0
Black	Retained Count	4	1	5	0	0
	Retention Rate	40.0%	100.0%	71.4%	0.0%	0.0%
	Total Students	10	1	7	2	0
Hispanic	Retained Count	651	569	598	420	7
	Retention Rate	68.4%	74.2%	72.1%	72.3%	46.7%
	Total Students	952	767	830	581	15
White	Retained Count	26	22	27	13	0
	Retention Rate	59.1%	68.8%	77.1%	81.3%	0.0%
	Total Students	44	32	35	16	0
Other	Retained Count	1	0	1	1	0
	Retention Rate	100.0%	0.0%	100.0%	100.0%	0.0%
	Total Students	1	0	1	1	0
Two or More Races	Retained Count	10	8	11	2	1
	Retention Rate	83.3%	80.0%	64.7%	66.7%	50.0%
	Total Students	12	10	17	3	2
Race/Ethnicity Unknown or Missing	Retained Count	4	2	0	3	0
	Retention Rate	57.1%	100.0%	0.0%	50.0%	0.0%
	Total Students	7	2	1	6	0
Overall	Retained Count	339	197	247	652	3
	Retention Rate	51.1%	60.6%	48.8%	65.3%	50.0%
	Total Students	664	325	506	998	6

See Race/Ethnicity in Definitions and Methodology on page 12.

RETENTION: BY RACE/ETHNICITY

National Results for Two-Year Public Institutions



Race/Ethnicity		Fall 2018 Entering Cohort	Fall 2019 Entering Cohort	Fall 2020 Entering Cohort	Fall 2021 Entering Cohort	Fall 2022 Entering Cohort	Fall 2023 Entering Cohort
Asian	Retained Count	25,703	25,269	22,254	20,583	21,097	21,023
	Retention Rate	66.9%	65.8%	65.5%	64.5%	66.0%	65.9%
	Total Students	38,413	38,403	33,984	31,900	31,955	31,916
Black	Retained Count	46,282	47,348	38,763	38,253	39,888	34,484
	Retention Rate	45.1%	44.6%	45.9%	46.4%	46.2%	45.7%
	Total Students	102,608	106,061	84,470	82,418	86,354	75,422
Hispanic	Retained Count	109,405	110,220	93,090	94,562	102,562	95,112
	Retention Rate	57.3%	53.6%	55.2%	56.6%	56.9%	56.5%
	Total Students	190,889	205,619	168,740	167,104	180,108	168,472
White	Retained Count	195,099	192,328	168,207	165,600	162,293	139,127
	Retention Rate	56.9%	55.3%	54.7%	56.6%	57.8%	57.6%
	Total Students	343,061	347,894	307,698	292,842	281,005	241,727
Other	Retained Count	3,748	3,475	2,258	2,854	3,341	3,695
	Retention Rate	57.4%	60.3%	60.1%	58.8%	62.0%	62.0%
	Total Students	6,533	5,759	3,759	4,855	5,386	5,959
Two or More Races	Retained Count	18,274	18,760	17,156	17,189	19,119	18,195
	Retention Rate	53.4%	51.9%	51.7%	53.4%	54.8%	56.2%
	Total Students	34,198	36,148	33,195	32,213	34,898	32,352
Race/Ethnicity Unknown or Missing	Retained Count	9,065	9,073	6,950	7,219	8,969	8,474
	Retention Rate	49.2%	43.0%	46.1%	44.3%	49.9%	40.6%
	Total Students	18,436	21,081	15,068	16,312	17,986	20,859
Overall	Retained Count	46,547	44,193	38,343	46,431	54,891	56,382
	Retention Rate	48.0%	44.3%	48.4%	48.8%	52.2%	52.9%
	Total Students	97,044	99,865	79,309	95,244	105,124	106,677

See Race/Ethnicity in Definitions and Methodology on page 12.

Definitions and Methodology

Fall Enrollment

This report defines a fall enrollment as any enrollment that meets one of the following criteria:

- a. Begins between August 15 and October 31 (inclusive), OR
- b. Ends between September 15 and November 30 (inclusive), OR
- c. Begins before August 15 and ends after November 30

Please note this is a change from previous versions of this report.

Retention

Defined in this report as continued enrollment (or degree completion) within the same higher education institution in the fall semesters of a student's first and second year.

Persistence

Defined in this report as continued enrollment (or degree completion) at any higher education institution - including one different from the institution of initial enrollment - in the fall semesters of a student's first and second year.

Starting Enrollment Intensity

A student is classified as having started college in a full-time or part-time status based on their earliest reported enrollment intensity within the entering fall term. The part-time group comprises three-quarter-time, half-time and less-than-half-time students. Students enrolled in a non-credential program or whose program level (certificate, associate, or bachelor's degrees) was unreported are not included in the full-time and part-time categories. Therefore, the sum of full-time and part-time students may not match the overall cohort count. Non-credential programs include preparatory coursework, teacher certification, or other non-credit career and technical education (CTE) programs that may lead to an industry certification if the student takes the certification exam. Program Unknown reflects students with an unreported program level. The circumstances behind the lack of program information are institution-specific and can range from first-time students who are required to be undeclared until they declare a specific major, to non-degree students.

First-Time Status

This report uses historical Clearinghouse enrollment and degree data to confirm that students included in the study (1) showed no previous college enrollment in the four years prior to the entering cohort year and (2) had not previously completed a college degree. In order to reliably identify students with prior enrollments, this report is limited to institutions that began submitting enrollment data to the Clearinghouse for terms beginning on or before June 1st of the year that is four years before the earliest eligible cohort.

Degree-Seeking Status

The retention rates reported by IPEDS are limited to degree-seeking students. This report differs in that it includes all entering students, including non-degree-seeking students, for the 2014 cohort. Beginning with the 2015 cohort, non-degree-seeking students were reported in a separate category and are not included in this report.

Former Dual Enrollment Students

The cohorts used in this study include former dual enrollment students: first-time college students who had taken college courses prior to graduating from high school. Students were identified as former dual enrollment students if they were under 18 years of age during any enrollments that occurred prior to the cohort year.

Race/Ethnicity

The race/ethnicity categories included in this report are White Non-Hispanic, Black Non-Hispanic, Asian, Hispanic, Two or More Races, Other Races (includes non-resident alien, American Indian/Alaskan native, Pacific Islander, native Hawaiian or other Pacific Islander) and Unknown.

In the graphs, every race/ethnicity category is represented although the marker for every category may not be visually distinguishable. This is because, in some cases, the values for 2 race/ethnicity categories are almost identical and their markers are the same shape. In these situations, one marker may be hidden behind another. This gives the appearance of a missing race/ethnicity category in the graph.